

G A M B I T G A L L E R Y

Moment, in the Stillness

a solo exhibition by

ByeongDoo Moon

COLLECTION OF WORKS

GAMBIT GALLERY



I Have Been Dreaming To Be a Tree, 2025
16 ft 4 in (H) x 8 ft (W) x 8 ft (D)
Stainless Steel Wire

GAMBIT GALLERY



Moment, in the Stillness_For Susan, 2026
8 ft 6 in (H) x 6 ft 7 in (W) x 4 ft (D)
Stainless Steel Wire

GAMBIT GALLERY



Different Layer Of Time, 2023
8 ft (H) x 5 ft 8 in (W) x 4 ft 3 in (D)
Stainless Steel Wire

GAMBIT GALLERY



Still Life, 2016

5 ft 4 in (H) × 2 ft (W) × 2 ft (D)

Stainless Steel Wire

GAMBIT GALLERY



Blue Bird, 2023

5 ft 9 in (H) x 2 ft 11 in (W) x 20 in (D)

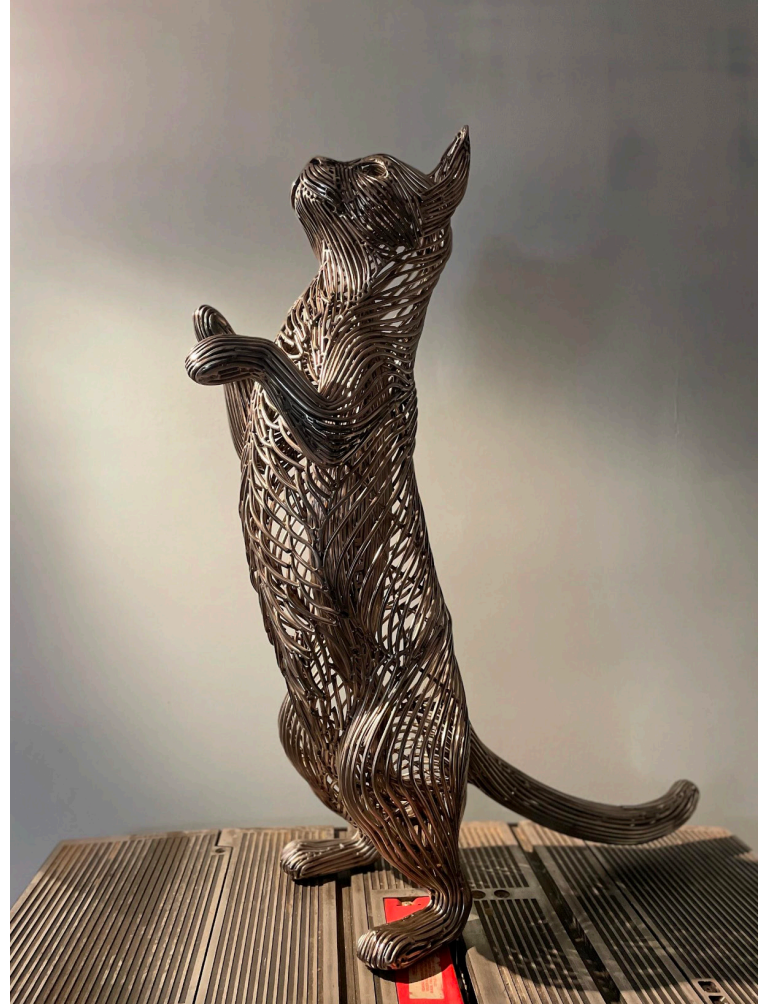
Stainless Steel Wire

GAMBIT GALLERY



When you say Hello, 2023
5 ft 9 in (H) × 2 ft 3 in (W) × 2 ft 2 in (D)
Stainless Steel Wire

GAMBIT GALLERY



I Can See You, 2023
2 ft 10 in (H) x 2 ft 5 in (W) x 11 in (D)
Stainless Steel Wire

GAMBIT GALLERY



How Goes It, 2026
1 ft 6 in (H) × 3 ft 11 in (W) × 1 ft (D)
Stainless Steel Wire

GAMBIT GALLERY

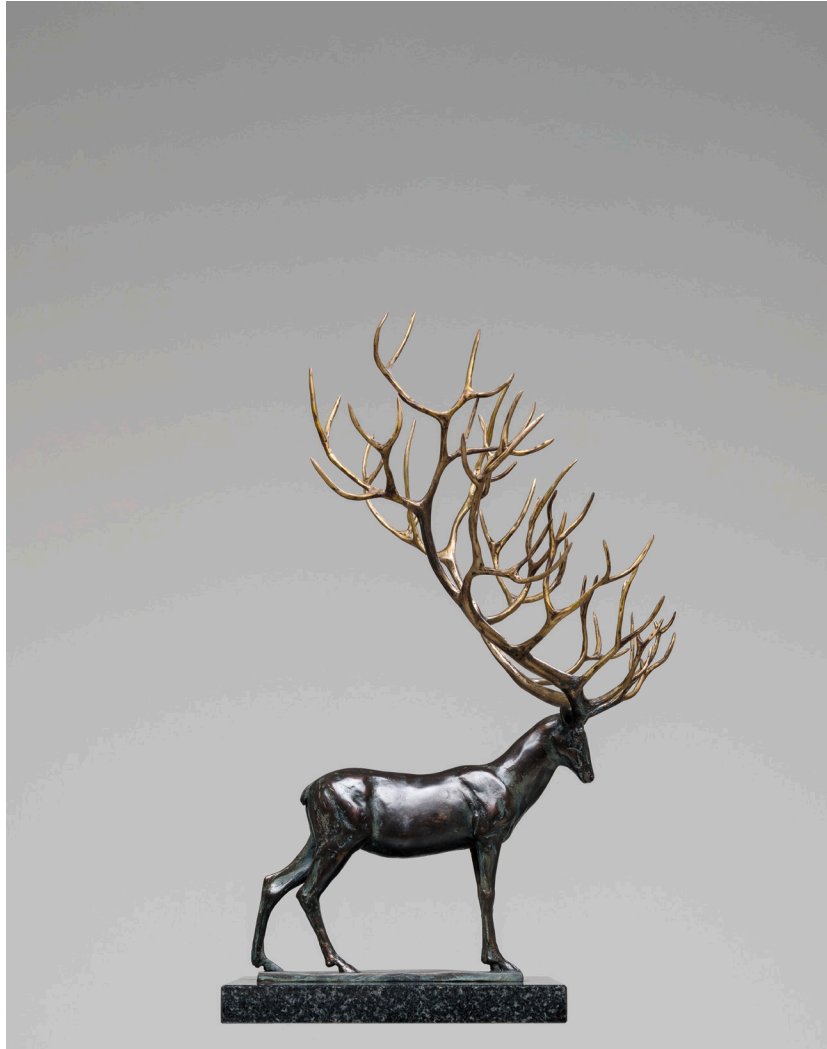


In the Island, 2023

2 ft 10.5 in (H) × 11 in (W) × 10 in (D)

Stainless Steel Wire

GAMBIT GALLERY



I Have Been Dreaming To Be a Tree II, 2016
2 ft 2 in (H) × 2 ft (W) × 2 ft (D)
Bronze

GAMBIT GALLERY



Home of Growing Trees I, 2025
Stainless Steel Wire

GAMBIT GALLERY



Home of Growing Trees II, 2025
Stainless Steel Wire

GAMBIT GALLERY



Home of Growing Trees III, 2025
Stainless Steel Wire

GAMBIT GALLERY



Traveler's Room, 2023
3 ft (H) × 1 ft 10 in (W) × 1 ft (D)
Stainless Steel

GAMBIT GALLERY



Still Life II, 2016
14 in (H) x 2 ft 7 in (W) x 20 in (D)
Stainless Steel

GAMBIT GALLERY



By the Island, 2020
Copper Wire, Driftwood

GAMBIT GALLERY



By the Island I, 2020
Copper Wire, Driftwood

GAMBIT GALLERY



By the Island II, 2020
Copper Wire, Wood

GAMBIT GALLERY



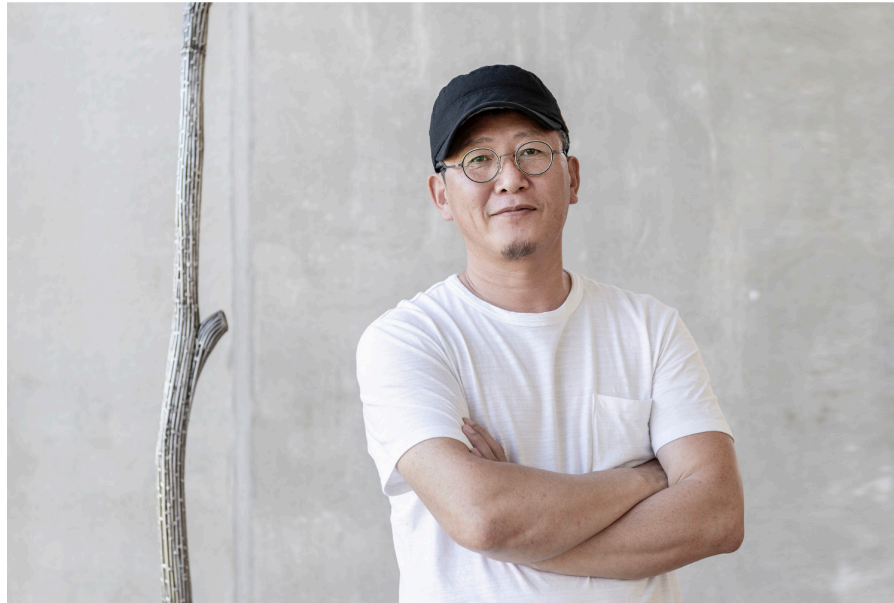
By the Island III, 2020
Copper Wire, Wood

GAMBIT GALLERY



Leave or Stay, 2020
14 in (H) x 2 ft 7 in (W) x 20 in (D)
Copper Wire

GAMBIT GALLERY



Artist Biography

ByeongDoo Moon is a Korean sculptor who has mastered the art of stainless steel to explore the coexistence of humans and nature in this small universe. Developing a sense of unity through countless bending and welding of sharp and cold wires, he has created work that dives into the temperature of living creatures and metal, and the symbiosis between humans and nature.

Statement

What I can see any object means that object can also see me. But such natural common sense is diluted because of the very common sense itself. The difference between what I can see something and what I can't depends on whether you and I can exchange each other's meaning. And it oscillates and expands to the inside and outside. Rather we would intuit the essence in the exchange of a great many meaning. Life always dreams beyond its boundary. It doesn't pursue only one single shape. It is the boundary that draws a line between us but boundaries are related to each other like a web.

GAMBIT GALLERY

Artist CV

EDUCATION

2001 Graduated from Graduate School of Sculpture, Jungang Univ. (MFA)
1996 Graduated from Department of Sculpture, College of Fine Arts, Jungang Univ., Korea (BFA)

TEACHING

2006–2015 Instructor, Chung-ang University, Ansung, Korea
2002–2004 Instructor, Chung-ang University Graduate School, Seoul, Korea
2010–2011 Instructor, Incheon Catholic University Graduate School, Songdo, Korea

AWARDS

2021 Art on the Streets Colorado Springs – Third Place Winner
2018 Art on the Streets Colorado Springs – Juror Award Second Place
2017 Art on the Streets Colorado Springs – People’s Choice Award
2017 Art on the Streets Colorado Springs – Honorable Mention
2011 SXS Bondi, People’s Choice & Staff’s Choice – Award
2010 Invitational Exhibition Modern Korea Sculpture – Best Picture
2009 Posco Steel Art Awards
2001 National Arts Exhibition – Award
2000 Jungang Art Grand Exhibition – Excellence Award

SOLO EXHIBITIONS

2022 By the Island – CJ.ONE Gallery / New York
2021 My Scenery – Modbo Gallery / Colorado Springs
2020 Beyond MOON – Art bn Gallery
2019 Borderline on the Story – SUHADAM Art Space
2016 How Goes It – Art bn Gallery
2016 How Goes It – Samtoh Gallery
2015 Still Life – Space Noon Gallery
2015 Strange – Chung Hak Museum
2011 Metaphor for Everyday Life – Gongpyeong Art Center
2011 Life Costume – ArtGa Gallery
2008 Life Costume – Saempyo Space
2008 On the Road – Minerva Gallery
2006 Circulation and Transformation – Samtoh Gallery
2006 Incheon Multi Culture and Art Center
1998 The Flash – Space SAL

GROUP EXHIBITIONS

2025 Summer Fling - Gambit Works, NYC
2024 The Kennedy Center - Upper Lawn, DC
Amalgam - Gambit Works, NYC
2023 SculptureNow 2023 – The Mount in Lenox, MA
Sculpture Garden – Patchogue Arts Council, NY
2022 Jungle to Jungle – Sixsummit Gallery, NY
2021 Art on the Streets – Colorado Springs
Moon Art Fair – Hamburg, Germany
The Other Art Fair – LA
2020 Art Museum Installation Exhibition – Pankyo Hyundai Department Store
Anseong Urban Environment Exhibition – Nakwon Historical Park
PLAS 2020 – Coex
2019 Anseong Urban Environment Exhibition – Nakwon Historical Park
2018 Seoul International Art Expo Coex / 20th Art on the Streets 2018 – CO
2017 Outdoor Sculpture with Geumcheon-gu – Central Park
100 Sculptor’s Exhibition & Beyond – Seoul Coex Hall
19th Art on the Streets – Colorado Springs
2016 See What You’ve Seen – Beyond Isolated Time – Art bn
Korea Galleries Art Fair – Coex-Seoul
Metal Spirit Exhibition – Kosa SpaceG-Seoul
Art Fair – DDP International Conference Hall “Meet the Art of Plastic”
PLAS2016 Plastic Art Seoul – Coex-Seoul
2015 Meet by the River – Puffinsbay
2014 First Impression – Korea Cultural Office Australia
2013 3rd Biennial Aarhus Exhibition – Sculpture by the Sea – Aarhus, Denmark
Sculpture by the Sea – Bondi
2012 International Sculpture Festa 2012 – Seoul Art Center, Korea
China International Art Exchange Exhibition – China Jimei University
Pietrasanta 2012 Korea Sculpture Festa – Sant’Agostino Museum
Sculpture by the Sea – Sydney
2010 Books and Meet the Author – Samtoh
Iron Alchemy – Pohang City Museum
Outdoor Sculpture – Art Valley Laver, etc.